

**Radiology SA
Head Office**

T (08) 8402 0200
F (08) 8402 0247
79 Fullarton Road,
Kent Town

**Calvary North
Adelaide Hospital**

T (08) 8402 0262
F (08) 8402 0272
89 Strangways Terrace,
North Adelaide

**Calvary Central
Districts Hospital**

T (08) 8402 0202
F (08) 8402 0210
25-37 Jarvis Road,
Elizabeth Vale

**North Eastern
Community Hospital**

T (08) 8402 0212
F (08) 8402 0220
Heading Avenue,
Campbelltown

**Marion Medical
Centre**

T (08) 8402 0235
F (08) 8402 0236
199 Sturt Road,
Seacombe Gardens

**Port Adelaide
Medical Centre**

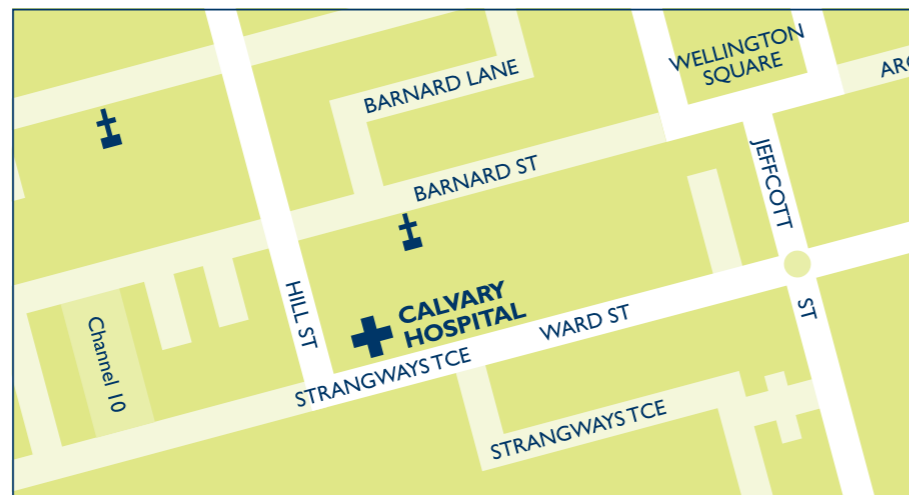
T (08) 8402 0223
F (08) 8402 0229
60 Marryatt Street
(Cnr Thomas Place),
Port Adelaide

**Memorial
Hospital**

T (08) 8402 0282
F (08) 8402 0292
Sir Edwin Smith Avenue,
North Adelaide

**Coronary CT Angiography
is available at our
Calvary North Adelaide rooms**

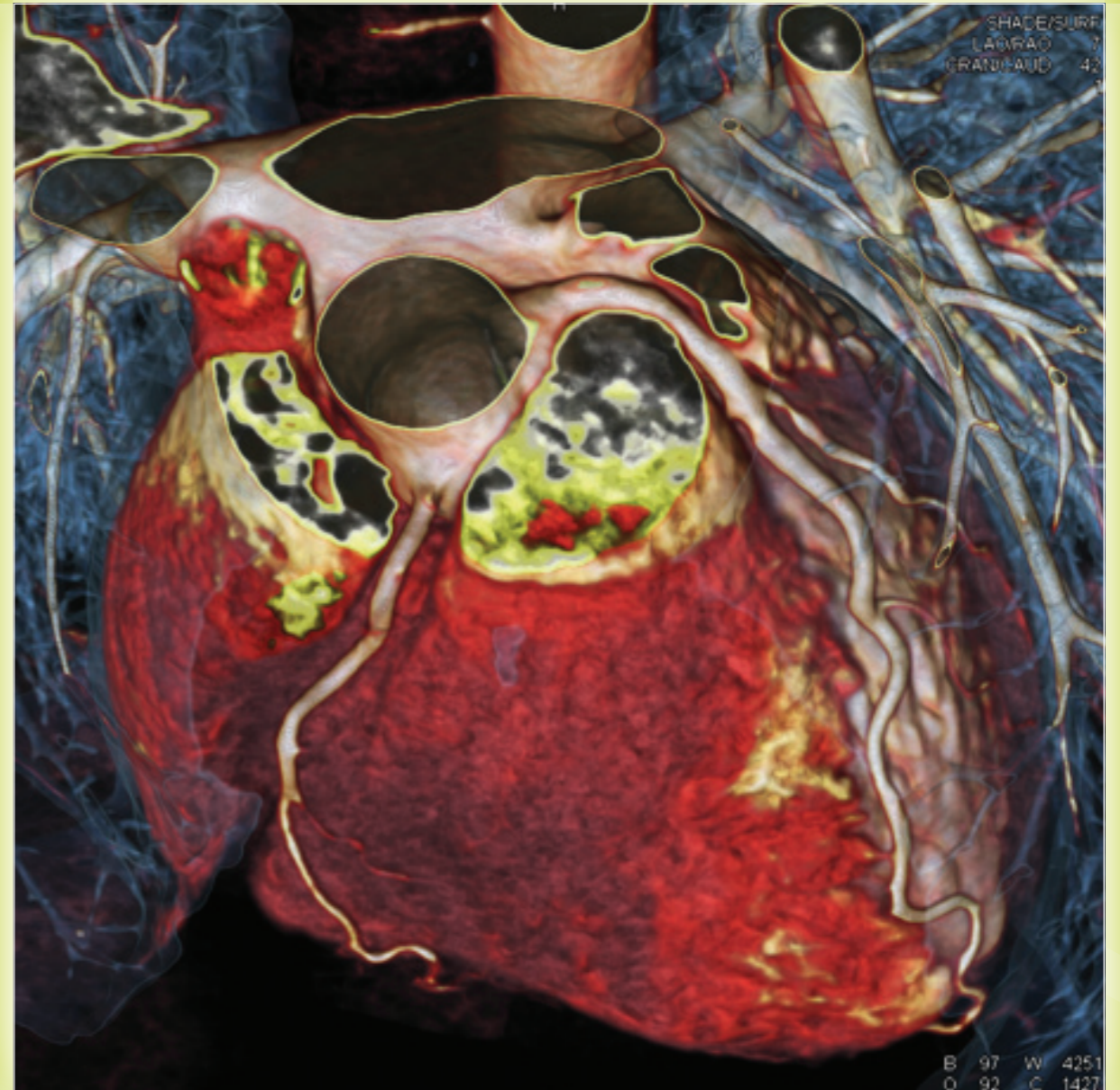
Telephone: 8402 0262
89 Strangways Terrace, North Adelaide
E radiologysa@radiologysa.com.au | W www.radiologysa.com.au



Drs Leigh Mosel, Brett Lorraine and Ghee Chew.

Please contact Radiology SA to discuss any aspect of
the extensive service we provide.

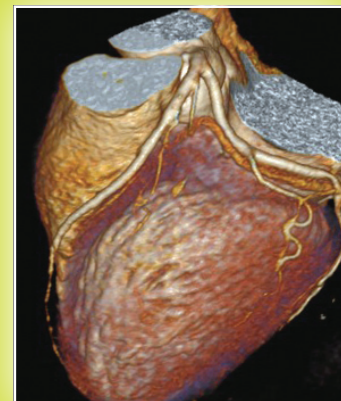
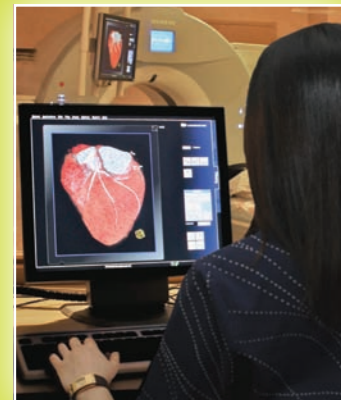
**All Appointments and Enquiries 8402 0200
Toll free 1300 732 270**



Coronary CT Angiography



Radiology SA is a wholly doctor owned South Australian company. Radiology SA offers a comprehensive Nuclear Medicine and Radiology service.



Coronary artery disease remains a major cause of morbidity and mortality in our society. With the progressive development of CT scanners over the recent years it has become possible to routinely and non-invasively image the coronary arteries. Radiology SA was one of the first radiology groups to install a 128 slice cardiac CT (Siemens AS+) and for some time has offered cardiac CT angiography and pulmonary venous imaging at our Calvary North Adelaide rooms.

Since 1st July 2011, a Medicare rebate for cardiac CT angiography has become available, via specialist referral, making this exciting investigative technology more accessible and affordable.

In some cases a CT coronary angiogram can help in avoiding a conventional catheter angiogram, providing peace of mind, while others will be identified requiring further management and investigation. The study has an excellent safety profile, with no greater risk than a post contrast CT scan for other indications.

Indications

Medicare rebatable indications are restricted to the following indications:

- Patients with symptoms suggestive of coronary artery disease in the low to intermediate risk group
- Exclusion of coronary artery anomalies or fistulae
- Assessment prior to non-coronary cardiac surgery

The following indications are based on multi-society consensus guidelines but are not Medicare rebatable:

- Symptomatic patients with chronic stable angina
- Evaluation of coronary arteries in patients where non invasive tests results are equivocal or discordant
- Evaluation of bypass graft patency
- Anatomical assessment pre repeat cardiac coronary surgery
- Investigation of cardiac masses and pericardial disease

Other possible indications:

- Screening / Risk Assessment
- Pre employment / Insurance assessment
- Atypical chest pain
- Assessments of coronary artery stents

CT Coronary angiography is not the imaging modality of choice for patients with unstable angina and acute coronary syndrome and can be difficult to interpret in patients with heavily calcified coronary vessels.

Contraindications

There are few absolute contraindications to Coronary CTA

Patients not suitable for cardiac CT angiography include those with:

- Significant renal impairment
- Contrast allergy
- Tachyarrhythmias not treatable with beta blockade

Our service

To obtain the best quality imaging it is preferable to maintain a regular heart rate of <65 bpm, usually achieved by means of beta blockers. This can be arranged by the referring doctor, or alternately, Radiology SA offers an on-site physician who can manage heart rate control.

Those presenting with a suitable heart rate can be scanned on the day without additional beta blockade, while those with higher heart rates will be suitably prepared for a follow-up appointment.

The Study

ECG monitoring leads are attached for cardiac gating. Intravenous contrast is injected via the cubital fossa to opacify the coronary arteries during scanning. Scans are performed using dose modulation techniques to minimize radiation exposure.

Reconstructions are performed by our staff with the option of images on hard copy, CD, or via electronic distribution. Our ANZCTCA accredited radiologists will provide a concise report to accompany the images, identifying and quantifying significant lesions.

Pricing

A specialist referral is required for a Medicare rebate, Radiology SA also offers a concessional rate for non rebatable referrals. Patients holding Concession or Health Care Cards will be scanned at no out of pocket expense, as is Radiology SA practice for our other services.

